



WELCOME

INVERLEITH HOCKEY CLUB



SEASON 2019/20



Welcome to Inverleith Hockey Club

Against the norm for the time, we were proudly founded as a mixed social hockey club in 1917. From that beginning we have grown a 103 year old history of being an inclusive, family-orientated club, who aim to engage the whole of our community with sport.

With hockey programmes for under eights through to veterans, which cater for everyone from social players to internationalists, we are

Edinburgh's hockey club for everyone.

Welcome to or welcome back to Inverleith Hockey Club!

It will be more than fantastic having you playing in Purple in our one-hundred and third season!

THE BIG PURPLE PRINT

Our Purple family places a lot of importance on these core values and this season we will be asking everyone to live by them, in order to help us achieve our vision of being a hockey club for everyone.



Respect

We show respect to everyone by treating them with courtesy, politeness and kindness.



Invested

We will take ownership of all that is happening, get involved and help shape its future.



Inclusivity

We will be inclusive of all. Always. We are one big family with an open door.



Excellence

We will aim for excellence and be ambitious about what we can achieve.



The Small Purple Print



What Hockey is on Offer This Season?

We have outdoor and indoor training for all players, whatever their ability, age or aspirations, led by our team of paid coaches.

Throughout the season, all our outdoor and indoor teams also compete in competitive weekend leagues and cup competitions.

What Hockey is on Offer This Season?

Training will be held at the following times and venues:

Day	Tuesday Outdoor
Time	18:30 - 20:20
Team	Ladies 1s
Team	Ladies 2s
Team	Ladies 3s
Team	Men's 1s
Venue	Edinburgh Academy Newfield Pitches

Day	Wednesday Outdoor
Time	18:30 - 20:20
Team	Men's 2s
Team	Men's 3s
Team	Men's 4s
Venue	Edinburgh Academy Newfield Pitches

Day	Thursday Outdoor
Time	18:30 - 20:20
Team	Men's 1s
Team	Men's 2s
Venue	Edinburgh Academy Newfield Pitches

Day	Thursday Outdoor
Time	18:30 - 20:20
Team	Ladies 1s
Venue	TBC

Indoor training will run November to February in venues to be confirmed.



Summer Hockey

Don't worry the hockey doesn't stop! We have our own summer hockey club called The Rivelin that gives us our hockey fix over summer.

Mixed Up Mondays: Every Monday through the summer we run a family summer hockey night where we book a pitch, play some hockey between whoever turns up and light up the BBQ.

Mixed Summer Slam: Every Thursday through the summer we play in a local 6 a side league against other clubs/groups.

To stay up to date with our summer hockey join this Facebook group:

<https://www.facebook.com/groups/319025404897031/>



Purple Hockey

At every level our hockey is characterised by an aggressive intent to go forward.

We play exciting attack-minded hockey. In possession we always look to go forward. Out of possession we look to win the ball back as quickly as possible, so we can go forward again.

Get excited.



Where are we?

We play where the club was founded, Inverleith Park.

HOME PITCH ADDRESS:

Edinburgh Academy Newfield

2 East Fettes Avenue EH4 1DL

#ThePark

WELCOME



What Socialising is on Offer This Season?

Our social committee:

- Sara Forbes (Co-Social Secretary)
- Matt Christie (Co-Social Secretary)
- Morgan Wilson
- Callum Dowie
- Stuart Hatton
- Grant McGeoghie

Be ready for...

Club Day
IHC Golf Outing
Karaoke Night
Christmas Social
Ceilidh
Sports Day
Club Dinner

Full calendar to come.



Club Kit

Our club are proud to wear Purple, and bar a wartime shortage of purple fabric, have done so for the past 103 years! Our club kit is made by Adidas and is sourced for us by the fantastic PSL Team Sports and will be available for you to purchase, via an online club shop and in person, at PSL's Edinburgh Shop.

What items am I expected to own?

- Home top, skorts/shorts and socks

What personalisation can I get on my kit?

- Numbers not names
- Numbers will be issued by the club. If you need a number, YOU MUST email getyourpurplerobes@gmail.com to be issued one, this is to prevent number duplication across club.
- Leisurewear can be personalised with initials only.



Club Kit

Our stores:

- <https://www.pslteamsports.com/InverleithHockey>
- Aitken & Niven, 6 Falcon Road West, Morningside, Edinburgh, EH10 4AQ

What items can I get online?

- All our leisure wear
- All our home and away kit

What items can I get in our physical store?

- All our leisure wear
- All our home and away kit
- In store, initials and numbers can usually be applied to kit on the same day as purchase.

For issues regarding kit please contact getyourpurplerobes@gmail.com



Registration

Ready to sign up to a season with Inverleith Hockey Club?

To join or rejoin our club you must complete an online registration form.

Upon completion you will receive a confirmation email and information about how to pay subscriptions.

It is as easy as that!

The online form can be found here:

<http://www.inverleith-hc.co.uk/adult-registration/>



Subscriptions

Outdoor subs determined by age as at 1st September:

- 24 and over - £240 (payment plan available at £40 pm over 6 months)
- 19 and over but under 24 - £170
- 14 and over but under 18 (playing adult hockey) - £170
- Under 18 (playing youth hockey only) - £150

Indoor subs

- Outdoor season IHC members - £80
- Playing Indoor only for IHC - £100

Account Name: Inverleith Hockey Club

Account Number: 06001708

Sort Code: 80-02-28

Reference: Subs-SURNAME

Outdoor subscriptions are to be paid by 30th September. Indoor subscriptions to be paid by 30th November.



Communication

Web Site

The Inverleith Hockey Club website can be found at:

<http://www.inverleith-hc.co.uk/>

This is a valuable source for club news and all key information.

Social Media

Facebook Page: Our community hub for all club news and events!

Instagram: Your insight into club life!

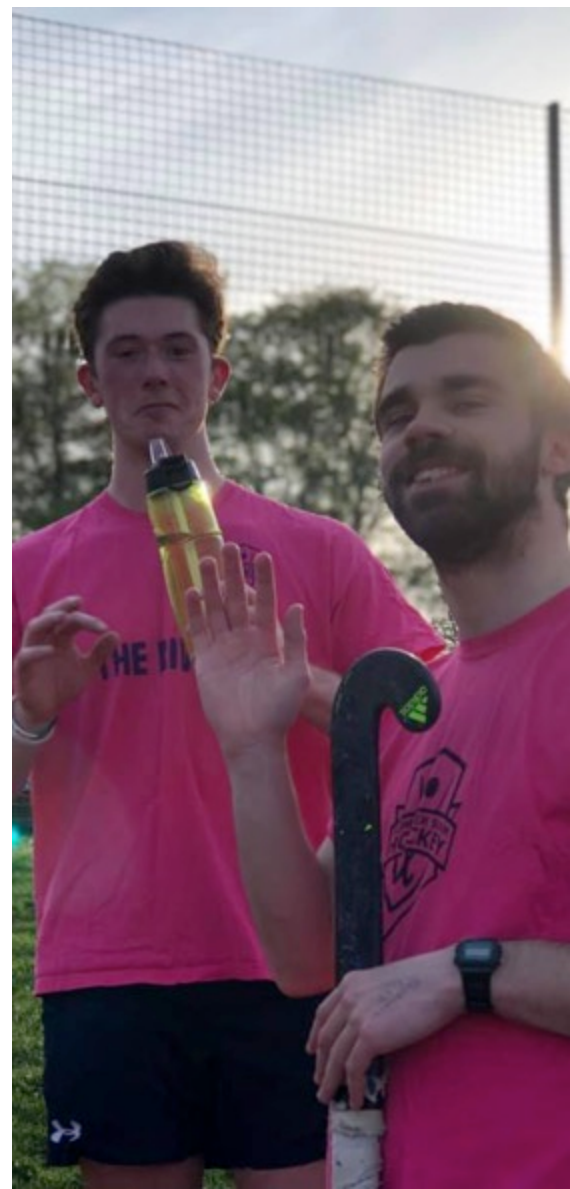
Twitter: Your feed for club news!

Follow us:

Twitter: @Inverleithhc

Facebook: Inverleith Hockey Club

Instagram: Inverleith Hockey Club



Communication

Members Facebook Group

The club has a Members Facebook Group. This group serves as a forum, out of the public eye, for club discussions about anything from organising club events to organising umpires. All major club organisation will be done via this group.

Therefore, can all players please join this community.

<https://www.facebook.com/groups/461196747381937/>

Teamer

We will be managing our season through the sports management app Teamer. Events will be made on Teamer, invites will be sent, you will receive a text or email and you will be asked to reply Yes or No - easy as that. It is even easier if you download the free app!

You will receive an invite from your team captain.

Code of Conduct

Player Code of Conduct

A code designed to ensure we all know how to behave when representing the club both in club kit and beyond. When completing our online registration form you will be asked to sign up to this code. The following Codes of Conduct are based on the concept of fair play, defined by:

- Respect for the rules of Field Hockey as governed by the FIH, England Hockey and as directed by Scottish Hockey;
- Respect for the officials and their decisions, always;
- Respect for all participants, including team-mates, coaches, opponents, parents, carers and spectators;
- Equality in participation;
- Maintaining positive self-control at all times.

PLAYER CODE OF CONDUCT

- Make our sport fun and enjoyable, first and foremost;
- Play fairly and encourage your team-mates;
- Display good sportsmanship at all times;
- Never threaten players or officials;
- All players must play within the rules and respect officials and their instructions and decisions;
- Never use foul or abusive language to either your team-mates, officials, spectators or opponents;
- Respect the choices of all members;
- As a representative of Inverleith Hockey Club, you must behave well and in an appropriate manner at all times;
- Always, regardless of the result, shake hands with your opponents at the end of the game and look them in the eye;
- Police each other. Set an example for yourself and all to follow;
- Pay any fees for training or events promptly;

Player Code of Conduct

- Do not use social media as a platform to be abusive to other members of the club, opponents or officials. This will not be tolerated;
- Keep to agreed timings for training and competitions or inform their coach or team manager if they are going to be late;
- Wear suitable kit for training and match sessions, as agreed with the coach/team manager;
- Engage with what my coach tells me. Take ownership of your development;
- Always maintain our club values;
- Talk to someone I trust if I'm unhappy about anything at my club.
- Substance use / abuse
 - All players must abide by the Scottish Hockey Anti-Doping Rules
 - All players must not use illegal substances whilst at club events or whilst representing the club
 - All players must not promote the use of illegal substances

Hockey is a great team sport to be involved in and your conduct is central to your enjoyment of the game. Particularly be aware of how your actions affect those of your team-mates and opposition.

Always strive to develop your skills and those of your team-mates and above all else, 'lead, do not follow' - play your part and do your best.

Please respect the 103 years of history you carry with the badge and always strive for positive behaviours.

Better, Together, Always.

Spectator Code of Conduct

In addition to our Player Code of Conduct we also have a Spectator Code of Conduct:

- All spectators must respect players, coaches and officials and their decisions. The use of bad language or negative comments which may cause offence will not be tolerated. Spectators displaying these kinds of behaviours will be asked to leave the pitch and the Club reserves the right to ask the relevant player to leave the Club. This covers training sessions and matches and also applies to the use of Social Media;
- Spectators should applaud good play on both teams;
- Spectators should be role models congratulating opponents and making their players and coaches feel welcome;
- Always maintain our club values.

Grievance Procedure

The club believes that it is important that all members, coaches, administrators and parents associated with the club should, at all times, show respect and understanding for the safety and welfare of others. Therefore, members are encouraged to be open at all times and to share any concerns or complaints that they may have about any aspect of the club.

Grievance Procedure

Should any member have a grievance against the club or any of its members, there is a set procedure that should be followed.

If the matter cannot be resolved by reasonable conversation between those concerned then the following process should be followed:

- The grievance should be detailed in writing to your Men's or Ladies Vice President's
- They will then investigate the matter, seeking advice and if required ask for evidence from all parties involved.
- A conclusion will be reached and all parties directly involved advised.
- An independent disciplinary panel, headed by a Sport's Lawyer, now exists at the club and can be called upon at the Vice President's discretion to resolve issues.

The club has always preferred any matters arising be settled amicably and without resort to formal process, however, this path is open to all.



Our History

Inverleith was founded in 1917 and is now over 100 years old! As a club we are immensely proud of our history. So you can get to know our beginnings, here is an edit of 'An Early History of Inverleith Hockey Club. 1917 - 1967', written by Ernest S.Wall.

"Though nothing written can be found to substantiate the beginnings of the club there is no doubt from the memories of early members that in the Autumn of 1917 a mixed hockey club was functioning at Inverleith Park, Edinburgh, and naturally the club called itself Inverleith. The first written record is contained in the Minute Book dated 1919 - 1930. There it is noted that the club met at the Grange Cricket Club Ground on 4th October 1919 to elect office-bearers. The status as a mixed sports club in 1919 was a break from the mould, with many sports clubs being male only. Here we see that from day one, Inverleith was a club for all, promoting sport for all and social inclusion for all.



Our History

At the outbreak of the Second World War Inverleith had become one of the best clubs in the East/West, however, the War put amateur sport on hold for the best part of a decade. Current members must wonder why the Second World War had such an effect on the club. Perhaps more than any previous war, almost all normal civilian life was disrupted or totally abandoned and this included amateur sport, Inverleith fell by the wayside like almost everything else. However, despite this hardship, Inverleith meant so much to them, that players and officials returned and resuscitated the club in 1946 at the close of the War. Other clubs were not so lucky to have such a dedicated membership, and where not revived.

As part of the nature of the club Inverleith have always welcomed beginners at all times. In fact a 1938 newspaper cutting which highlighted Inverleith's coming of age specifically mentioned this latter point, which was also a strong plank of club policy during the the 1950's.



Our History

The burning topic of the fifties was whether or not to have league hockey and Inverleith played a persuasive and leading part in the necessary negotiations leading to the formation of an East League of one division of six clubs in 1954-55.

The 1st XI won the East League in its first three seasons and has won the major championship on eight occasions out of the thirteen seasons of East League hockey to date.

A league cup was also purchased by donations from clubs. Inverleith were the first winner of the League Cup. These successes were not gained at the cost of good hockey or by playing negative hockey. Our friends, and they seemed to be many, always appeared to enjoy their games against us and we also had the reputation of playing attractive hockey.



Our History

The question of Sunday hockey was also a lively issue in the mid-fifties and again Inverleith were one of the first clubs to arrange matches on Sundays. This was not done to break the Sabbath but to provide good hockey for younger members of reserve elevens and matches for those fanatics who had to have two matches at the week-end.

It was in this decade of the fifties that the basis of the current strength and prestige of the club was really laid. Inverleith gained an enviable reputation for good hockey, coupled with excellent results, so much so that opponents in every kind of match were out to defeat Inverleith at all levels of fixture.

The last few years brought enjoyable hockey to all Inverleith members and with it much success and pleasure for the Club both on and off the field.



Ernest S. Wall (1960)

Our History

The future is bright with more enjoyable hockey and social contacts old and new to look forward to. No one knows what the next fifty years will bring in terms of changes of rules (it is only thirty years ago, for example, that players were permitted to stop the ball with their foot), field marking and even types of sticks; but certainly *the Inverleith spirit, personified by a firm determination to survive, include all and succeed in the face of daunting difficulties, will remain. And this spirit will be strengthened by new adventures which will help bind members and their fiends even more closely together."*

Club Officials



President:
Paul Bowyer



Club Secretary:
Nicola Harkness



Fixtures Secretary:
Jonathan Bower



Ladies Vice President:
Rosina Barton



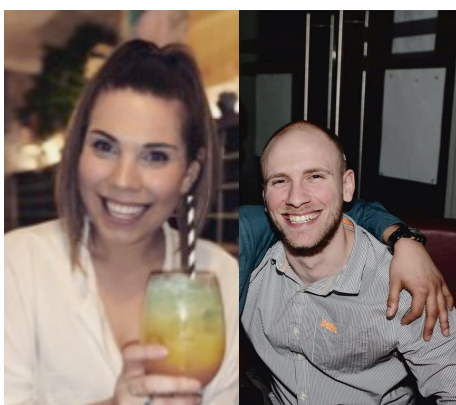
Men's Vice President:
Arnie Saithy



Treasurer:
David Barton



Head of Youth:
Thomas Barton



Social Secretary:
Sara & Matt



Kit Secretary:
Callum Dowie



Communications Secretary:
TBC



Summer Hockey Co-coordinator:
TBC



Fundraising Secretary:
TBC

Key Contacts

For all club matters beyond the remit of your particular section please contact our President, Paul Bowyer, now into his 7th term.

Paul Bowyer: president@inverleith-hc.co.uk

Ladies players should direct communications to:

Rosina Barton: ladiesvp@inverleith-hc.co.uk

Men's players should direct communications to:

Arnie Sathiy : mensvp@inverleith-hc.co.uk

For all payment questions, please contact our treasurer to discuss:

David Barton: treasurer@inverleith-hc.co.uk

For questions regarding registration, please contact our Club Secretary:

Nicola Harkness: secretary@inverleith-hc.co.uk

For all questions regarding kit, please contact our Kit Secretary:

Callum Dowie: getyourpurplerobes@gmail.com

WELCOME

Paul Bowyer | President

T: 07782326109

E: president@inverleith-hc.co.uk