



# WELCOME

## INVERLEITH HOCKEY CLUB



SEASON 2023/24



## WELCOME TO INVERLEITH HOCKEY CLUB

We are Edinburgh's hockey club for everyone.

We have 100 years of history of being an inclusive, family-orientated club.

With hockey programmes for under eights through to veterans, catering for everyone from social players to internationals, we are a club for any player.

Welcome to or welcome back to Inverleith Hockey Club!



## WELCOME TO OUR YOUTH ACADEMY

Inclusion

Development

Enjoyment

In our youth academy we focus on the development and enjoyment of all our junior players, supporting them to fulfil their potential and develop a long lasting love of hockey.



## CONTENTS

- 5 : [The Big Purple Print](#) (about our way)
- 6: [The Small Purple Print](#) (about our club)
- 11: [Training Times and Term Dates](#)
- 13 : [Location](#)
- 14 : [Kit](#)
- 15 : [Subscriptions](#)
- 16: [Communications](#) & [Cancellations](#)
- 19: [Registration](#)
- 20: [Selection policy](#)
- 24: [Key Contacts](#)
- 26: [Codes of Conduct](#)

# THE BIG PURPLE PRINT

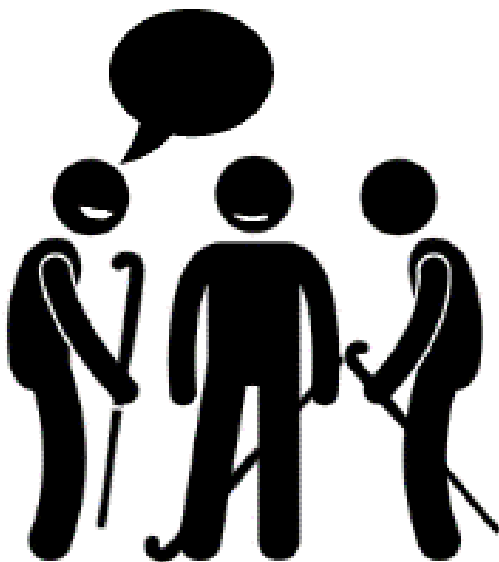
## OUR WAY

Our Purple family places a lot of importance on two community-building behaviours, and we ask everyone to live by them. As a family connecting with everyone is our DNA.



### LISTEN TO EVERYONE

We give anyone speaking our undivided attention and respect.



### SPEAK TO EVERYONE

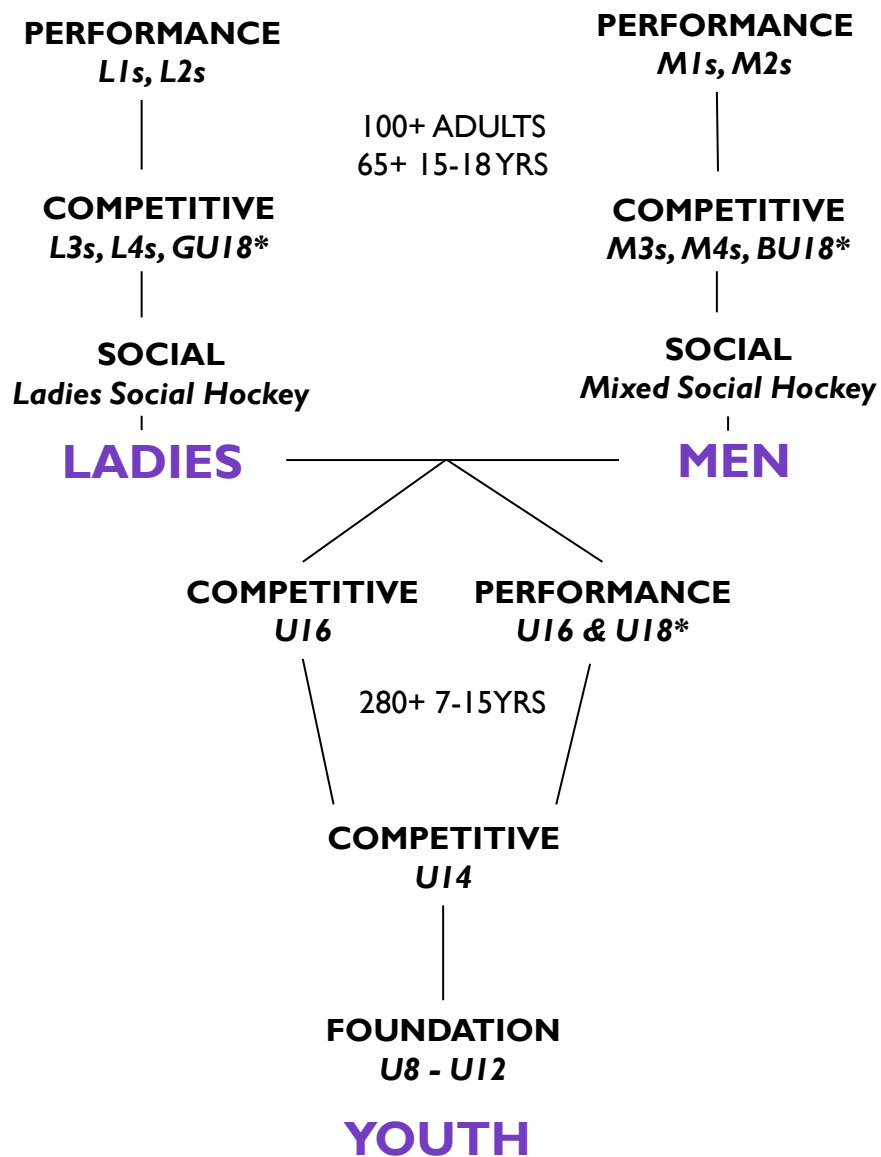
We speak to and grow relationships with everyone.



## THE SMALL PURPLE PRINT



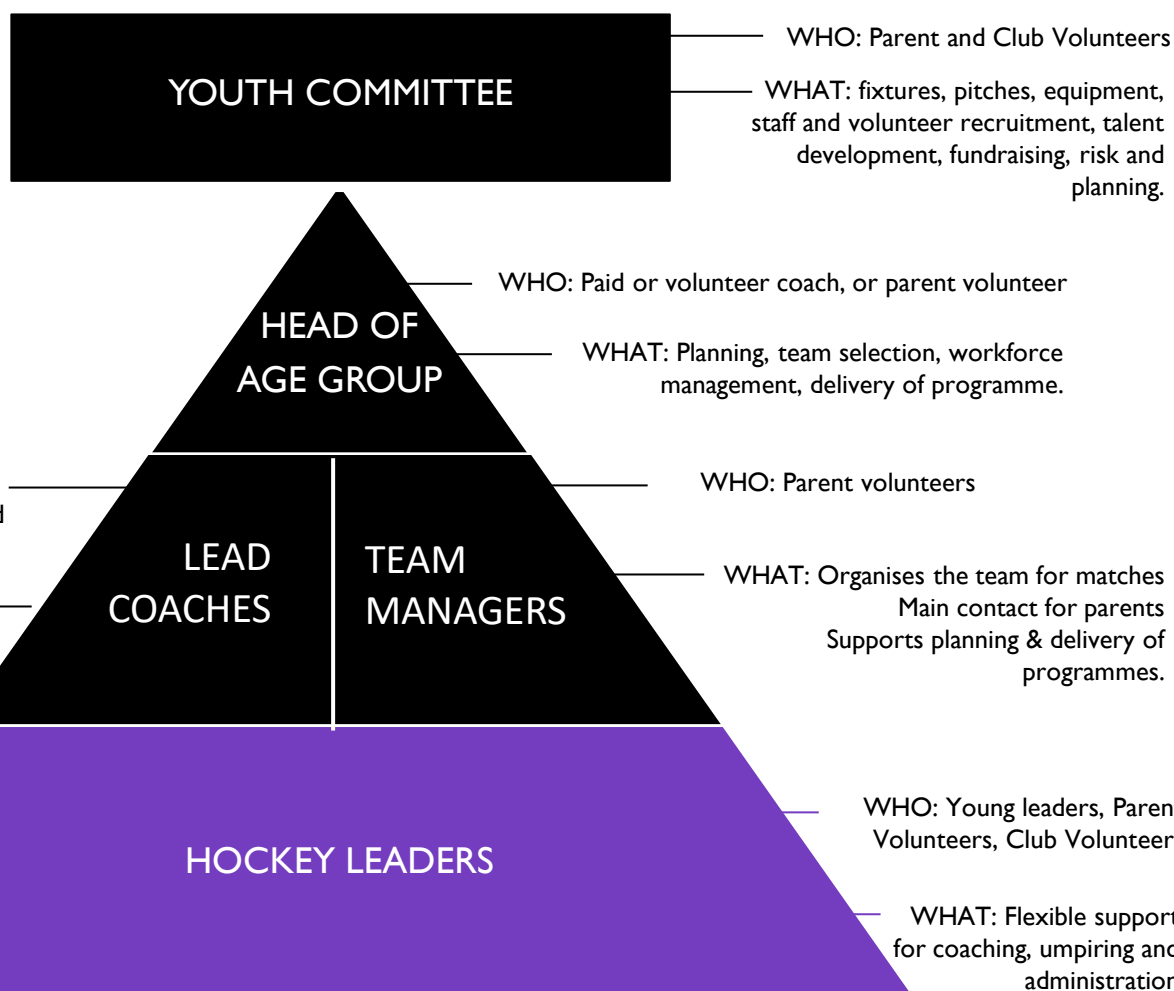
## OUR CLUB STRUCTURE



\* U18 boys and girls teams only form to compete in Scottish U18 Cups in September and October



## OUR WORKFORCE STRUCTURE





## WE NEED YOUR HELP

We are an amateur sports club, who has a few paid coaches but whose life blood is parent volunteers. Our membership fees reflect this.

Our volunteers are role models to our young people, showing them that they too can make fun things happen by joining in, organising, helping others and making connections.

The various volunteer roles we need are not onerous and can be done by rota/in combination. Hockey or sports experience is also not essential, there are many roles with transferable skills from you day job or life.

Our hockey programme, which gets 350+ kids playing hockey, is reliant on volunteers. Please help us.



## VOLUNTEER ROLES

### Team Manager:

Primary responsibility: Assigned a team or teams and helps assemble squads for match days, and communications with parents and players.  
Required for all age groups.

### Hockey Leader:

Primary responsibility: On a rota basis to support the coaches at training sessions or match day.  
Required for U8, U10, U12 and U14.

### Other support roles:

- Child protection administration
- Kit secretary
- Content creation i.e. photography, videography etc.
- General administration i.e. organising databases
- Pre-loved kit exchange and sales coordinator
- Volunteer training coordinator

If you can help with any, please email: [inverleithyouthsecretary@gmail.com](mailto:inverleithyouthsecretary@gmail.com)

It will be massively appreciated.

# TRAINING TIMES & MATCHES

Age Group	Training	Matches: Pending selection
Under 8 P2 – P3 Mixed	Sunday weekly 10:00 – 11:30 Edinburgh Academy Newfield Pitches	Ad hoc across season on a Sunday morning instead of training.
Under 10 P4 – P5 Mixed		At various locations in Edinburgh.
Under 12 P6 - P7 Mixed		Format: U8, U10 4-a-side; U12: 6-a-side
Under 14 S1 – S2 Mixed	Edinburgh Academy Newfield Pitches  Wednesday weekly Group White 18:00 – 19:15 Group Purple 19:00 – 20:15  Sunday weekly Both groups 11:45 – 13:15	Matches every second week on a Sunday morning instead of training.  At MES or Meggetland  Format: 8-a-side  Scottish U14 Cup: 11-a-side
Boys Under 16 S3 – S4  Some U16 boys will be invited in to the Men's programmes.	Sunday weekly 13:30 – 15:00 (Aug-Sep) 11:45 – 13:15 (Oct onwards) Edinburgh Academy Newfield Pitches	Fortnightly matches on a Sunday  Various times. Location mainly in Edinburgh & Lothians and occasionally further afield.  Format: 11-a-side
Girls Under 16 S3 – S4	Wednesday weekly 18:00 – 19:30 Bangholm Trinity Academy  Sunday weekly 13:15 – 15:00 Edinburgh Academy Newfield Pitches	Fortnightly matches on a Sunday  Various times. Location mainly in Edinburgh & Lothians and occasionally further afield.
GKs S1 – S6 Mixed	Sunday weekly 11:45 – 13:15 Edinburgh Academy Newfield Pitches	Games with age groups, as per above.

## TRAINING TIMES & MATCHES (cont)

Age Group	Training	Matches: Pending selection
Over 16 S5 – S6 Girls	Ladies' training Varying times and Edinburgh locations depending on which ladies' programme you are in. (refer to website for details)	Ladies league matches Saturday afternoons weekly, at locations in Edinburgh, with occasional games in East Lothian, Borders or the Central Belt.
Over 16 S5 – S6 Boys	Men's training Varying times and Edinburgh locations depending on which Men's programme you are in. (refer to website for details)	Men's league matches on Saturday afternoons weekly, at various locations in Edinburgh, with occasional games in East Lothian, Borders or the Central Belt.
***NEW*** U15, U18 Indoor Boys & Girls	From November to February Fridays at Bangholm Trinity Academy Sports hall 20 boys and 20 girls places only Extra fee applies	East District U15 & U18 Indoor cups Scottish Hockey U15 & U18 indoor cups

## TERM DATES

Winter Term: Monday 21<sup>st</sup> August 2023 – Sunday 3<sup>rd</sup> December 2023

Exclusive of Sunday 15<sup>th</sup> – Friday 20<sup>th</sup> October 23

Spring Term: Sunday 14<sup>th</sup> January 2024 – Thursday 28<sup>th</sup> March 2024

Exclusive of Sunday 11<sup>th</sup> – Friday 16<sup>th</sup> February 24

Summer Term: Monday 15<sup>th</sup> April 2024 – Sunday 2<sup>nd</sup> June 2024



## WHERE ARE WE?

We play where the club was founded, Inverleith Park.

### HOME PITCH ADDRESS:

Edinburgh Academy Newfield  
2 East Fettes Avenue EH4 1DL

### ADDITIONAL VENUE:

Bangholm Trinity Academy Sports Campus  
23 Craighall Gardens, Edinburgh, EH6 4RJ



## CLUB KIT

Buy new kit from our online store:

<http://www.inverleith-hc.co.uk/club-shop/>

### What items should I have?

U8/I0/I2

Home top OR purple training top

UI4/I6 and I6+

Home top, home socks and home shorts/skort

### Kit personalisation

- U8, UI0, UI2, UI4  
No numbers, no names or initials  
So it can be sold or donated to others.
- S4 to S6  
No names or initials.  
Numbers are required to play in adult teams which is when boys are in S4 and girls are in S5. If you need a number, you MUST first email [getyourpurplerobes@gmail.com](mailto:getyourpurplerobes@gmail.com) to be issued a unique club number.

FOR PRE-LOVED KIT, WATCH OUT FOR OUR KIT SWAP EVENTS  
and listings on Inverleith Family Facebook Group



## SUBSCRIPTIONS

### Youth outdoor subscriptions :

P3–P7 (approx. age 6–11): £150

S1–S6 (approx. age 12–18): £200

Instalment option:

P3–P7: £85 by 30 Sep, £65 by 31 Jan

S1–S6: £120 by 30 Sep, £80 by 31 Jan

Pro-rata fees for late joiners.

### Youth indoor fees :

U15, U18: £45 (payable in Nov)

### Payment details:

Account Name: Inverleith Hockey Club

Account Number: 06001708

Sort Code: 80-02-28

Reference: SUBS-(player's initial & surname)

- One payment per player.  
This helps our administration.

Other installment options by special arrangement, please contact our treasurer to discuss:

[inverleithtreasurer@gmail.com](mailto:inverleithtreasurer@gmail.com)

If we do not receive your fees by 31 October, your child will lose their right to participate.



## COMMUNICATION

### Pitchero

We manage our teams using the sports management app Pitchero. Training and matches for each team are posted on Pitchero, You will receive a text or email notification depending on your chosen app preferences and asked to reply Yes or No to the event - easy as that. It is even easier if you download the free Pitchero Club app!

When you join the club the youth secretary will invite you to join Pitchero.

### Social Media

Facebook: Our main community hub. Follow for club news and events!

Instagram: Your insight into club life! Follow for photos and videos from around the club.

Twitter: Another feed for club news!

Twitter: @Inverleithhc

Facebook: Inverleith Hockey Club

Instagram: Inverleith Hockey Club

[www.pitchero.com/clubs/inverleithhockeyclub](http://www.pitchero.com/clubs/inverleithhockeyclub)



## COMMUNICATION

### Web Site

The Inverleith Hockey Club website can be found at:

[www.inverleith-hc.co.uk](http://www.inverleith-hc.co.uk)

This is the source for all key information including training times and subscriptions.

### Members Facebook Group

The club has a Members Facebook Group. This group serves as a forum, out of the public eye, for club discussions about anything from training cancellations, arranging club events, sharing team news to organising umpires.

We recommend joining this community.

[www.facebook.com/groups/461196747381937/](https://www.facebook.com/groups/461196747381937/)



## CANCELLATIONS

If a session is cancelled, we will notify you by the following channels:

- We will email those affected.
- The event will be cancelled on Pitchero, and you should receive a notification. If not, you may need to adjust your notification settings by logging in to [www.pitchero.com](http://www.pitchero.com)



## REGISTRATION

Ready to sign up to a season with Inverleith Hockey Club?

To join or rejoin our club you must complete an online registration form.

Upon completion you will receive a confirmation email and information about how to pay subscriptions.

It is as easy as that!

The online form can be found here:

Existing members

<http://www.inverleith-hc.co.uk/youthreturnform>

New members

[www.inverleith-hc.co.uk/youth-new-joiner-form/](http://www.inverleith-hc.co.uk/youth-new-joiner-form/)

Registration queries

[inverleithyouthsecretary@gmail.com](mailto:inverleithyouthsecretary@gmail.com)



# SELECTION POLICY

*‘Getting it right for every player’*



## WHAT DO WE WANT TO ACHIEVE?

We want to get it right for every player. What does this mean?

- Opportunities to PARTICIPATE both in training and matches.
- Opportunities to stretch their PERFORMANCE appropriately.
- Opportunities to enjoy hockey with their PEERS.

This selection policy lays out how we will achieve the above.

# SELECTION POLICY

Player age groups are determined by school year. For competitions at U14 and U16 level, eligibility of teams is determined by player's age on 01/01/2024.

## **U8, U10 and U12**

- **Participation:** Participation for all. We do our best to ensure every player receives equal invites to match days. Every training session open to all.
- **Performance:** At this age teams are not picked based on performance, we instead pick teams based on school year and friendship groups. Coaches differentiate content to stretch and motivate players.
- **Peers:** Primary focus is on players playing with year group peers.

## **U14 and U16**

- **Participation:** Participation for all. We do our best to ensure every player receives equal invites to match days and has an equal opportunity to train.
- **Performance:** To ensure we stretch the performance of all players appropriately, at this age our players are seeded on performance, into teams who compete in different leagues against appropriate levels of opposition.
- **Peers:** We still aim to guarantee players are playing with peers where possible, but we know focus on grouping by performance.

We will consider moving players up or down an age group if:

- We think a new age group will provide appropriate stretch
- All their peers are in another age group

We want to get it right for every player. We don't always, however. If you feel we haven't achieved the right stretch for your child or have placed them without peers, please discuss this with us.



## PERFORMANCE SELECTIONS

When we select players for opportunities to train or play matches in higher teams based on their performance, we consider the following three criteria:

- Talent: A player's performance against the learning objectives for their age group.
- Behaviours: An athlete's long-term improvement is not determined only by talent, but by behavioural traits as well. Therefore, when identifying players for performance opportunities we also consider behavioural traits.
- Stretch: We must consider whether the intensity of the game play will be enjoyable to the player and therefore appropriate.



## KEY CONTACTS

# KEY CONTACTS

## Logistics:

- Each age group has a Team Manager who will be your primary contact for all match day and training logistics. Please look at your team page on Pitchero for who your team manager is.  
[www.pitchero.com/clubs/inverleithhockeyclub/contact](http://www.pitchero.com/clubs/inverleithhockeyclub/contact)

## Selections:

- Head of Youth or Head of Age Group (not the manager)

## Registration, waiting list:

- Youth Secretary | Claire Tait | [inverleithyouthsecretary@gmail.com](mailto:inverleithyouthsecretary@gmail.com)

## Payments:

- Club Treasurer | David Barton: [treasurer@inverleith-hc.co.uk](mailto:treasurer@inverleith-hc.co.uk)

## Youth committee 2023/24:

Head of Youth: Thomas Barton  
[youthheadcoach@inverleith-hc.co.uk](mailto:youthheadcoach@inverleith-hc.co.uk) 07914296848

Youth membership: Claire Tait [inverleithyouthsecretary@gmail.com](mailto:inverleithyouthsecretary@gmail.com)

U8, U10, U12 rep: Doug Wight [inverleithU10@gmail.com](mailto:inverleithU10@gmail.com)

U14, U16 rep: Ross Young [InverleithGUI6@gmail.com](mailto:InverleithGUI6@gmail.com)

Volunteer development: vacant

Youth fixtures: Lesley Wight [inverleithjrfix@gmail.com](mailto:inverleithjrfix@gmail.com)

Child Protection & Welfare Officer: Paul Bowyer [paulbowyer@live.co.uk](mailto:paulbowyer@live.co.uk)

We are always looking for more volunteers to help run our successful youth section. Please get in touch if you would like to join.



## CODES OF CONDUCT

# Player Code of Conduct

A code designed to ensure we all know how to behave when representing the club both in club kit and beyond. When completing our online registration form you will be asked to sign up to this code.

The following Codes of Conduct are based on the concept of fair play, defined by:

- Respect for the rules of Field Hockey as governed by the FIH and as directed by Scottish Hockey;
- Respect for the officials and their decisions, always;
- Respect for all participants, including team-mates, coaches, opponents, parents, carers and spectators;
- Equality in participation;
- Maintaining positive self-control, at all times.

## PLAYER CODE OF CONDUCT

- Make our sport fun and enjoyable, first and foremost;
- Play fairly and encourage your team-mates;
- Display good sportsmanship at all times;
- Never threaten players or officials;
- All players must play within the rules and respect officials and their instructions and decisions;
- Never use foul or abusive language to either your team-mates, officials, spectators or opponents;
- Respect the choices of all members;
- As a representative of Inverleith Hockey Club, you must behave well and in an appropriate manner at all times;
- Police each other. Set an example for yourself and all to follow;
- Pay any fees for training or events promptly;
- Do not use social media as a platform to be abusive to other members of the club, opponents or officials. This will not be tolerated;
- Reply promptly to match invitations;

# Player Code of Conduct

- Keep to agreed timings for training and competitions or inform their coach or team manager if they are going to be late;
- Wear suitable kit for training and match sessions, as agreed with the coach/team manager;
- Engage with what my coach tells me. Take ownership of your development;
- Listen to everyone;
- Speak to everyone;
- Talk to someone I trust if I'm unhappy about anything at my club;
- Substance use / abuse:
  - All players must abide by the Scottish Hockey Anti-Doping Rules
  - All players must not use illegal substances whilst at club events or whilst representing the club
  - All players must not promote the use of illegal substances;

Hockey is a great team sport to be involved in and your conduct is central to enjoyment of the game. Particularly be aware of how your actions affect those of your team-mates and opposition.

'Lead, do not follow' - play your part and do your best.

# Spectator Code of Conduct

In addition to our Player Code of Conduct we also have a Spectator Code of Conduct:

- All spectators must respect players, coaches and officials and their decisions. The use of bad language or negative comments which may cause offence will not be tolerated. Spectators displaying these kinds of behaviours will be asked to leave the pitch and the Club reserves the right to ask the relevant player to leave the Club. This covers training sessions and matches and also applies to the use of Social Media;
- Spectators should applaud good play on both teams;
- Spectators should be role models congratulating opponents and making their players and coaches feel welcome;

# WELCOME

INVERLEITH HOCKEY CLUB  
[www.inverleith-hc.co.uk](http://www.inverleith-hc.co.uk)